

MAGAZZINO

Antonio Biasiucci

Selected Works 1982 - 2022





Antonio Biasiucci

Mirabilia

2021

Installation view at Mattatoio, Rome, 2023

Antonio Biasiucci

Senza titolo (from Mirabilia series)

2021

Inkjet print

55 x 55 cm

Detail





Antonio Biasiucci

Domus Contemporanea

2023

Installation view at Galleria Civica Trento



Antonio Biasiucci

Corpo Ligneo Corpo Latteo

2022
Installation view



Antonio Biasiucci

Corpo Ligneo Corpo Latteo

2022
Installation view



Antonio Biasiucci

Corpo Ligneo Corpo Latteo

2022
Installation view



Antonio Biasiucci

Corpo Ligneo Corpo Latteo

2022
Installation view

Antonio Biasiucci

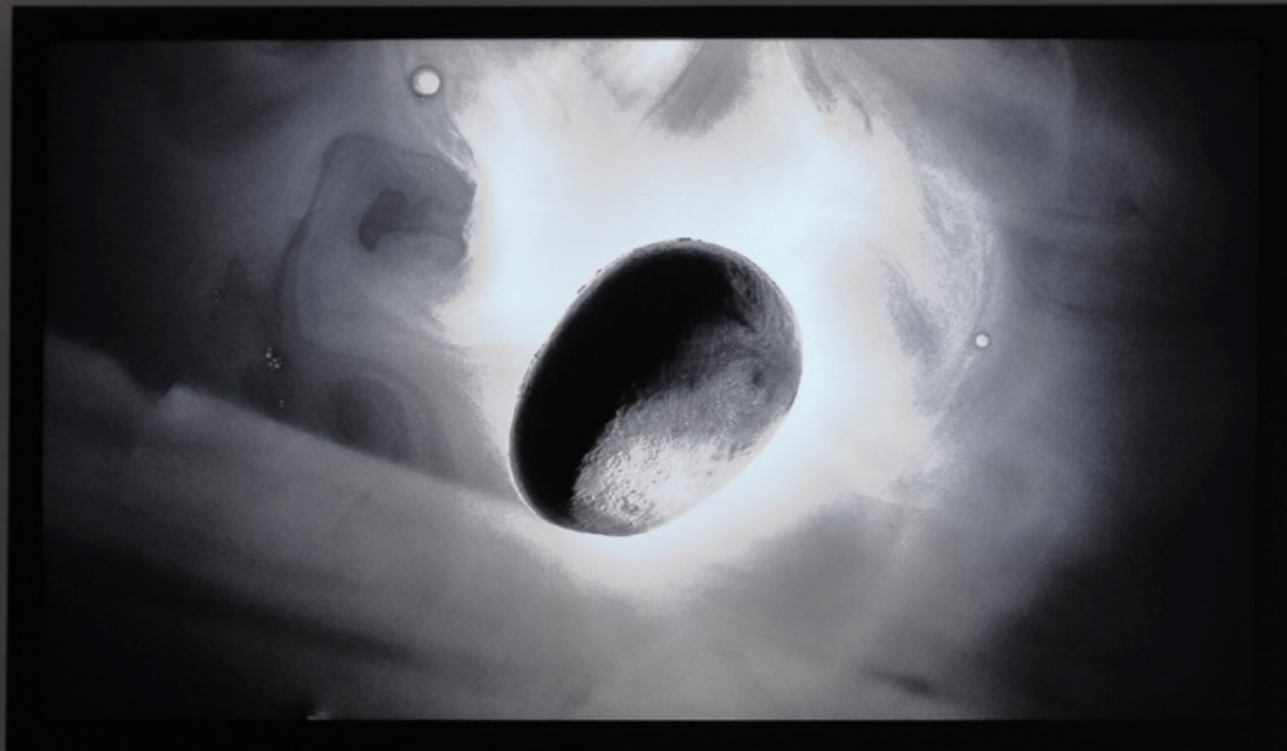
Corpo Latteo

2017 - 2021

Lightbox

65 x 115 x 8 cm

Ed. 1/5 + 2AP



In the series *Corpo Latteo* the artist observes a distant world, evoking stellar explosions or ambiguous celestial bodies, depicted in their change of state.

The reference to the body as an extended concept is a constant in Biasiucci's work (*Madri, Res, Ex Voto, Volti*), as well its translation to an essential level, its transfiguration to other domains of the real, very often, beyond the reach of our glance.

As the bread in *Pani* do suggest the matter of a far asteroid, the milk (itself a symbol of birth, of life, of coming-to-the-world) of *Corpo Latteo* do assume a gaseous state, gives the same sense of distance one has by looking at a remote place, in an unspecified "beyond".

This distance has almost its counterpoint to the presence of forms that do suggest a birth, the formation of an organism, almost as a quote to the *Star-child* who emerges from the deep dark in *2001: A Space Odyssey* final vision.



Antonio Biasiucci

Corpo Latteo

2017-2021

Lightbox

65 x 115 x 8 cm - Ed. 1/5 + 2AP

Corpo Ligneo

2020-2021

Inkjet print on baryta paper

30 x 55 cm

Framed dimensions: 82 x 82 cm- Ed. 1/5 + 2AP

Corpo Ligneo presents a series of cross-sections of tree trunks translate into highly evocative images, oscillating from the reference to a certain landscape painting, up to atmospheres pertaining to science-fiction or to Lovecraft's visions.

Biasiucci's *Corpi Lignei* do immerse the viewer in a sort of fantastic taxonomy, where one is not sure of looking at a mysterious alien vessel, the remains of a volcanic island or, more simply, the skylines of an absurd and decaying urban landscape.







Antonio Biasiucci

Codex

2017

Installation view at Magazzino, Rome



Antonio Biasiucci

Codex

2017

Installation view at Magazzino, Rome

MAGAZZINO

Antonio Biasiucci

Codex 2.93

2016

Inkjet print on paper mounted on alluminium

110 x 136 cm



MAGAZZINO

Antonio Biasiucci

Codex 89

2016

Inkjet print on paper mounted on alluminium

110 x 136 cm







Antonio Biasiucci

Multitudini

2016

Installation view at Fondazione Banco di Napoli, Naples



Res

1993/1999

American Accademy, Rome, 2014

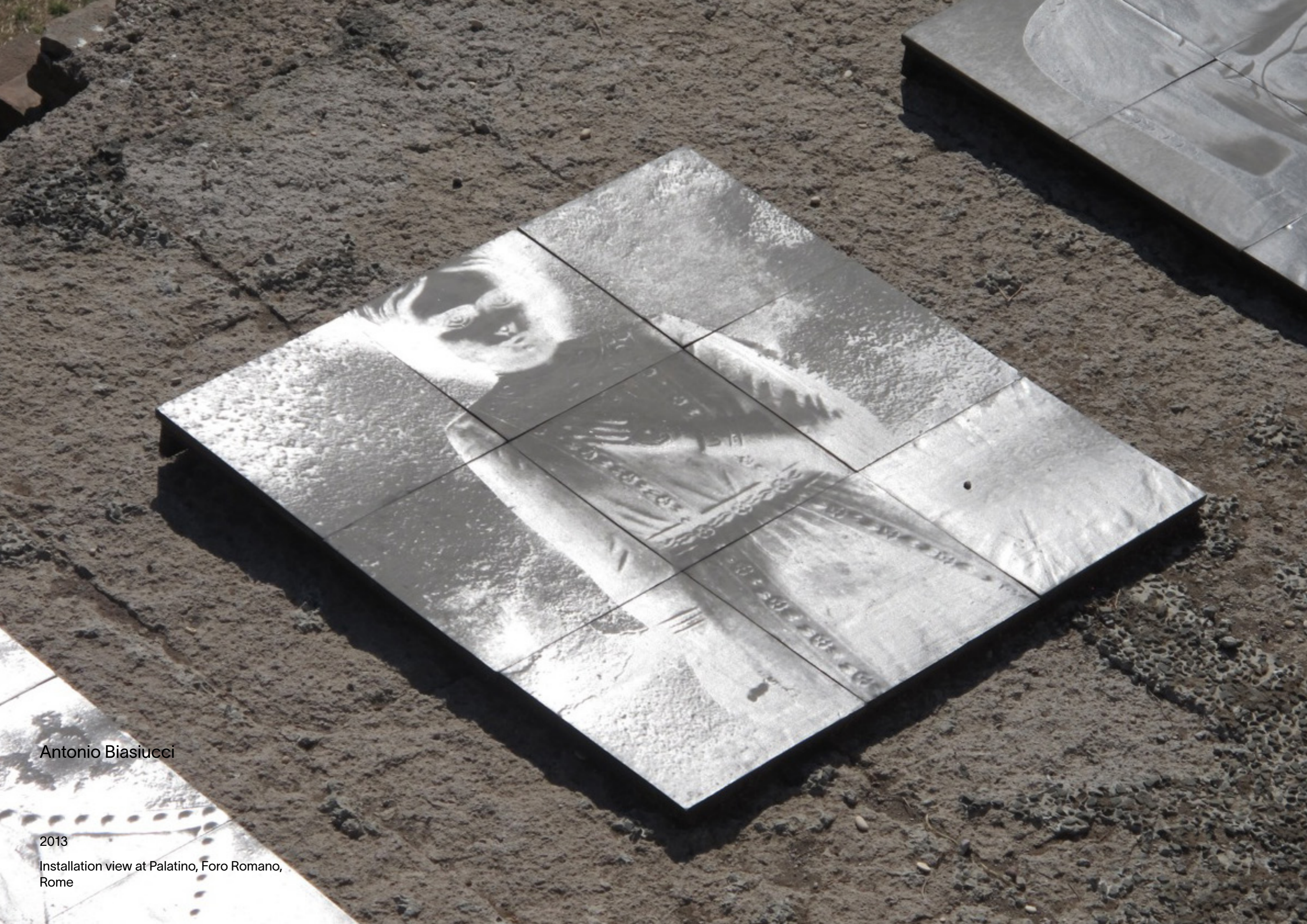


Antonio Biasiucci

2013

Installation view at Palatino, Foro Romano, Rome





Antonio Biasiucci

2013

Installation view at Palatino, Foro Romano,
Rome



Antonio Biasiucci

Tre Terzi

2013

Installation view at Villa Pignatelli, Naples



Antonio Biasiucci

Tre Terzi

2012

Installation view at Palazzo Poli, Rome



Antonio Biasiucci

Molti

2011

Installation view at Magazzino, Rome

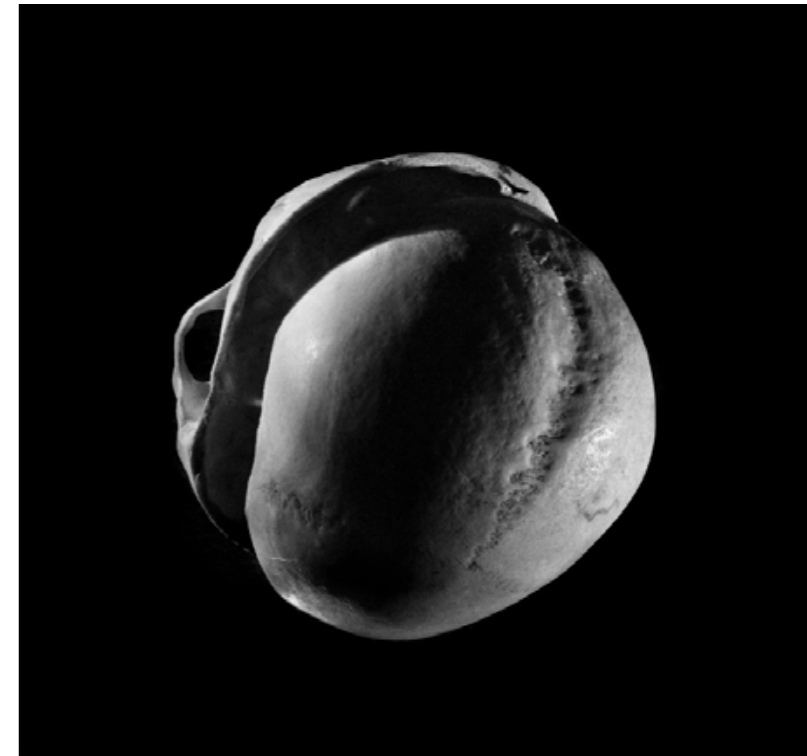
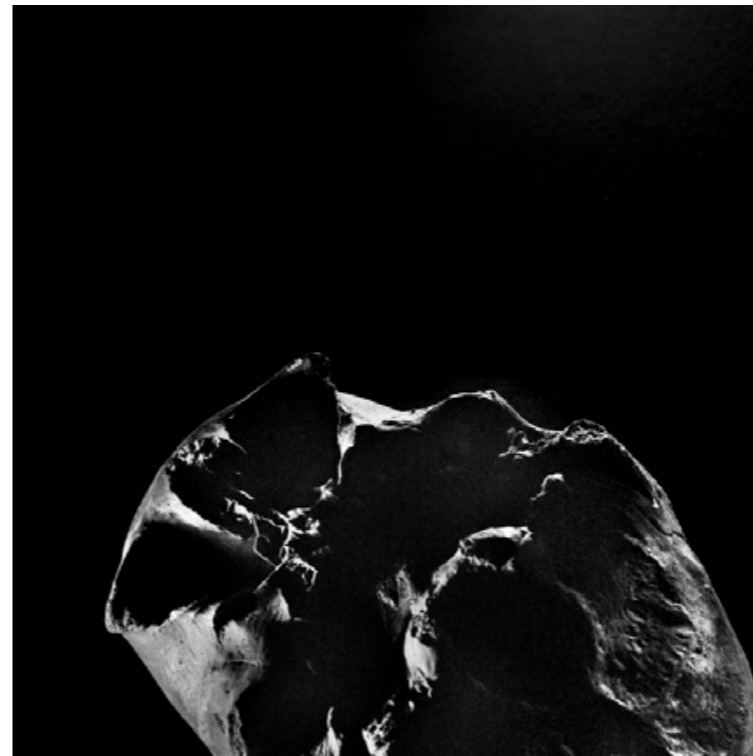
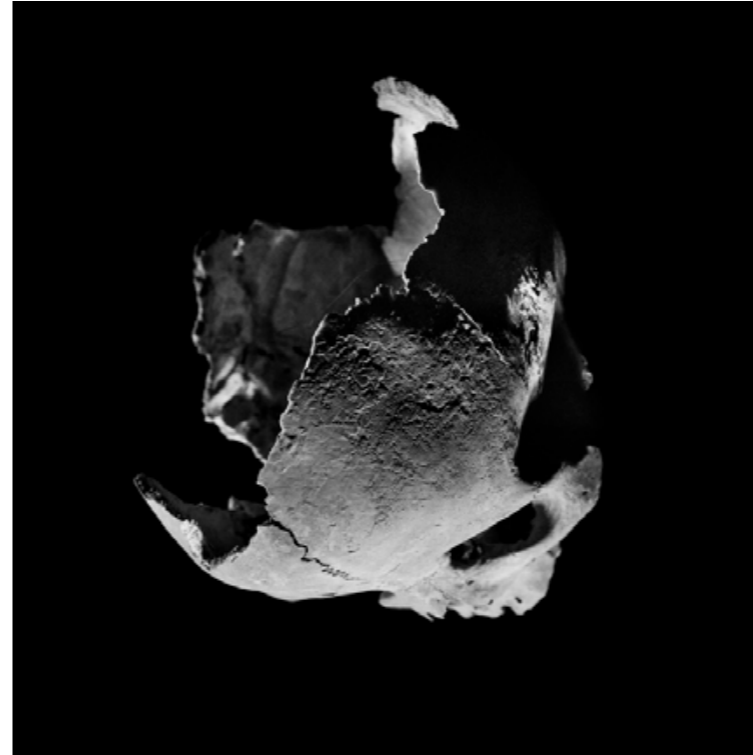
Antonio Biasiucci

Crani

2013

Polyptych, 24 elements
Silver gelatine on baryta print

30 x 30 cm each



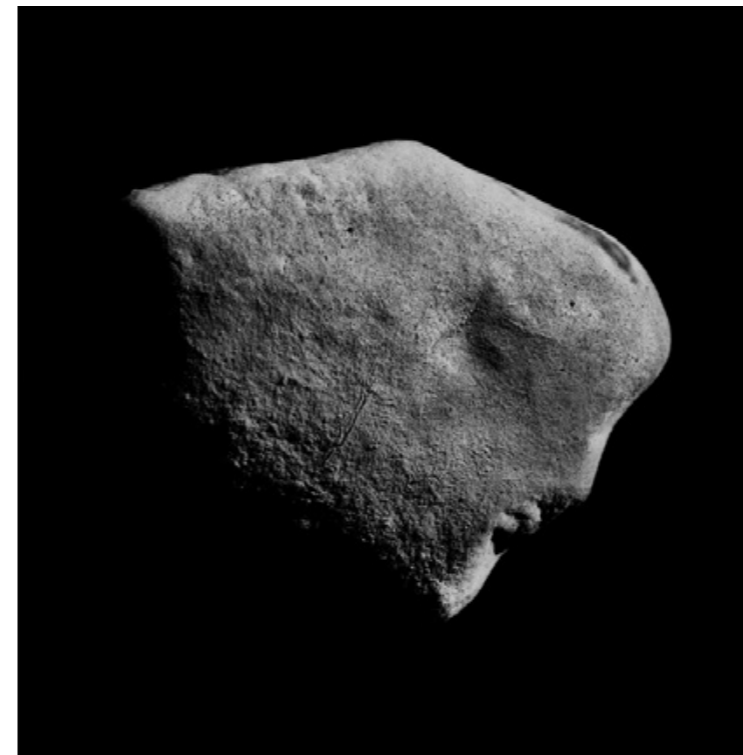
Antonio Biasiucci

Pani

2009/2011

Polyptych, 20 elements
Silver gelatine on baryta print

30 x 30 cm each



Antonio Biasiucci

Cantiere rione terra

2010

Polyptych, 37 elements
Silver gelatine on baryta print

30 x 30 cm each



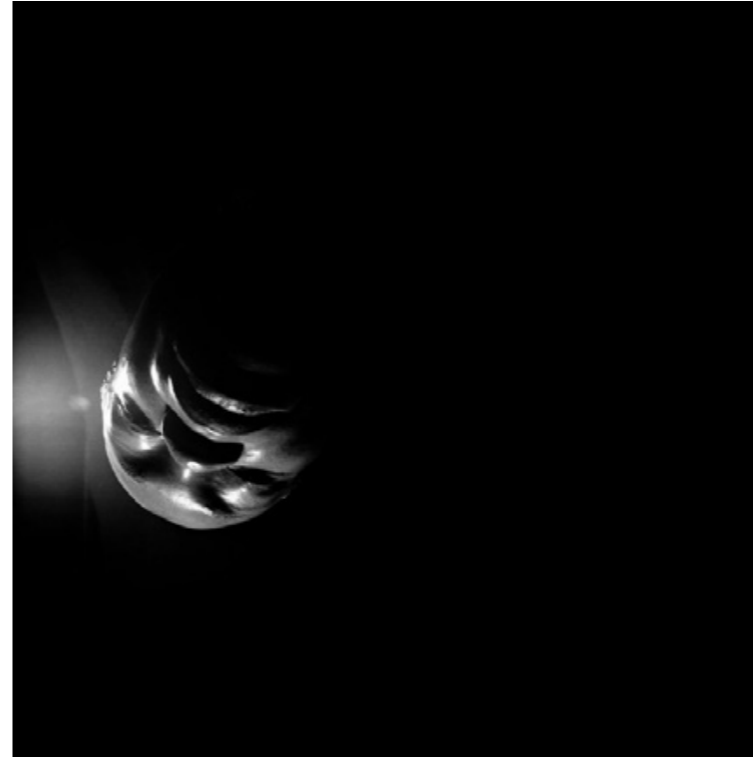
Antonio Biasiucci

Molti

2009

Polyptych, 40 elements
Silver gelatine on baryta print

30 x 30 cm each



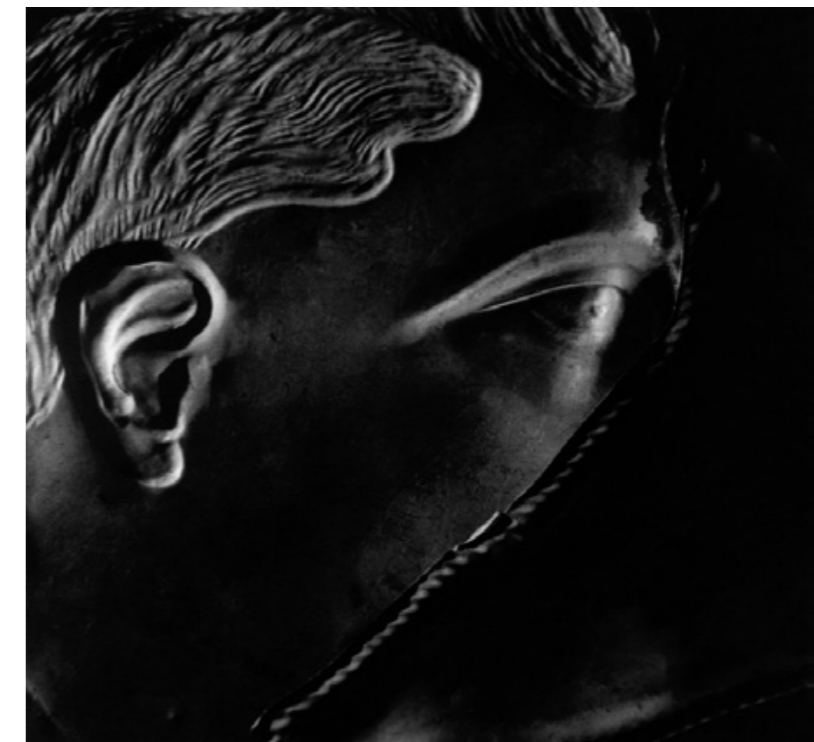
Antonio Biasiucci

Ex voto

2006

Polyptych, 32 elements
Silver gelatine on baryta print

37 x 37 cm each



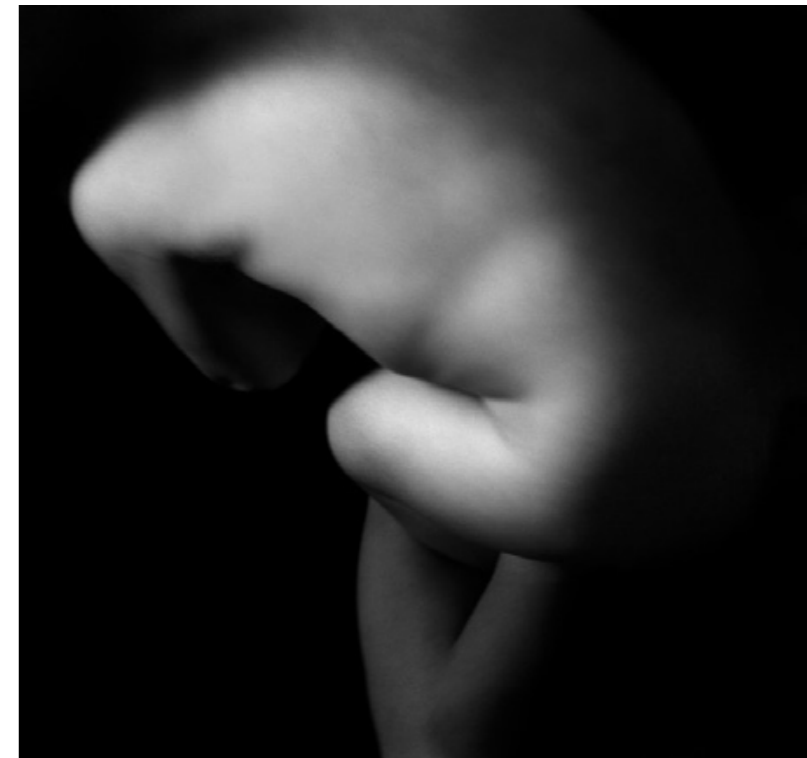
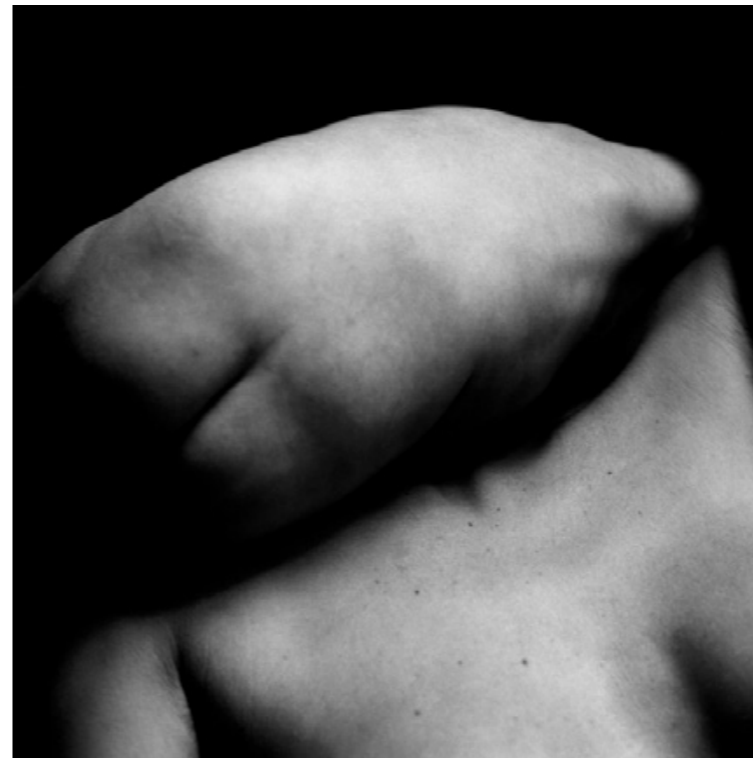
Antonio Biasiucci

Madri

1995/2000

Polyptych, 6 elements
Silver gelatine on baryta print

30 x 30 cm each



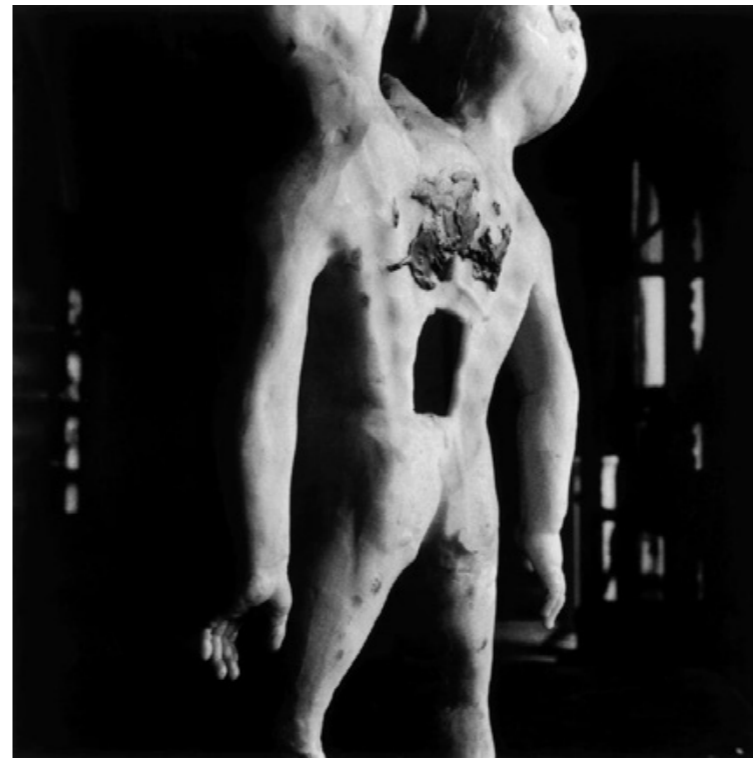
Antonio Biasiucci

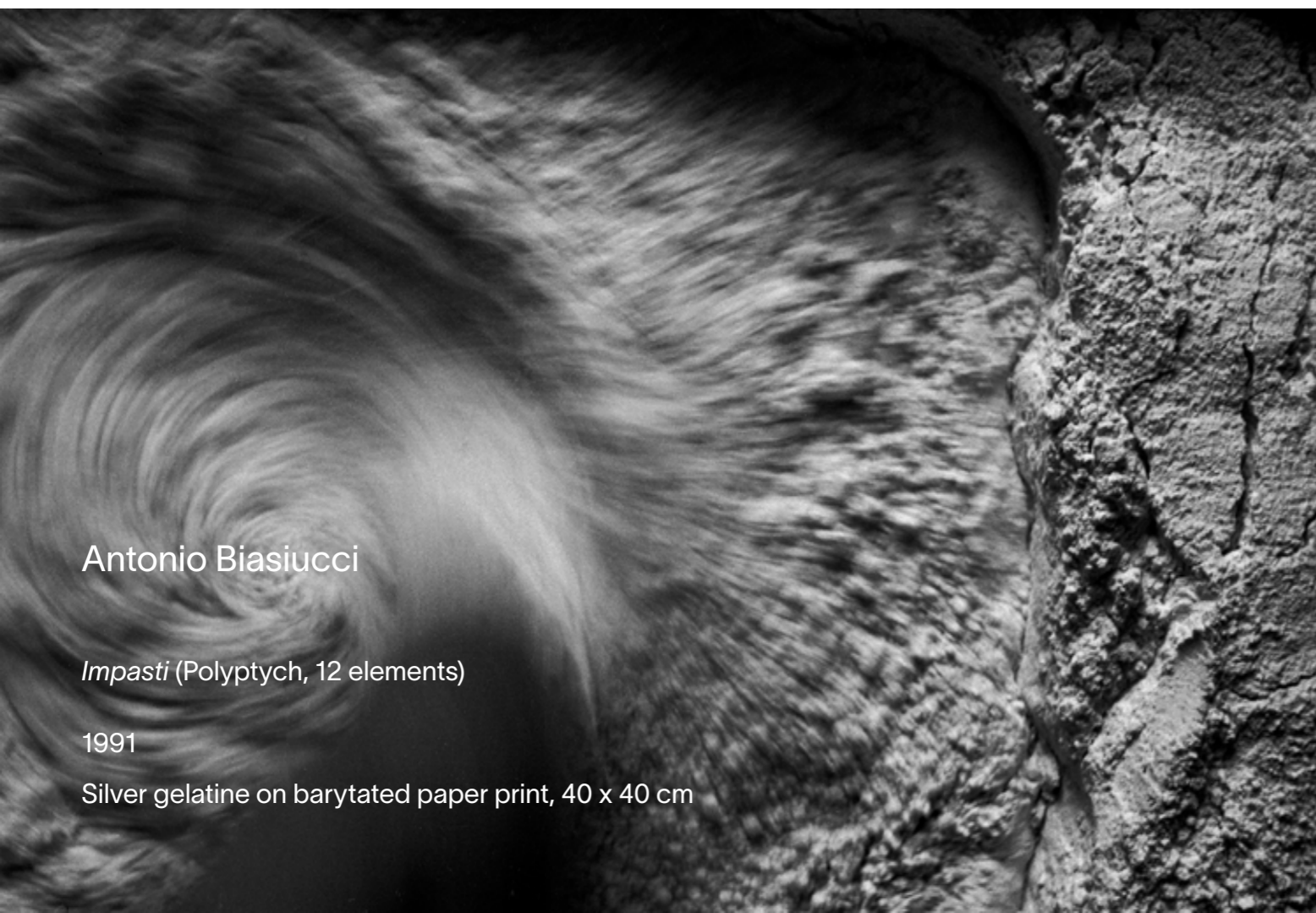
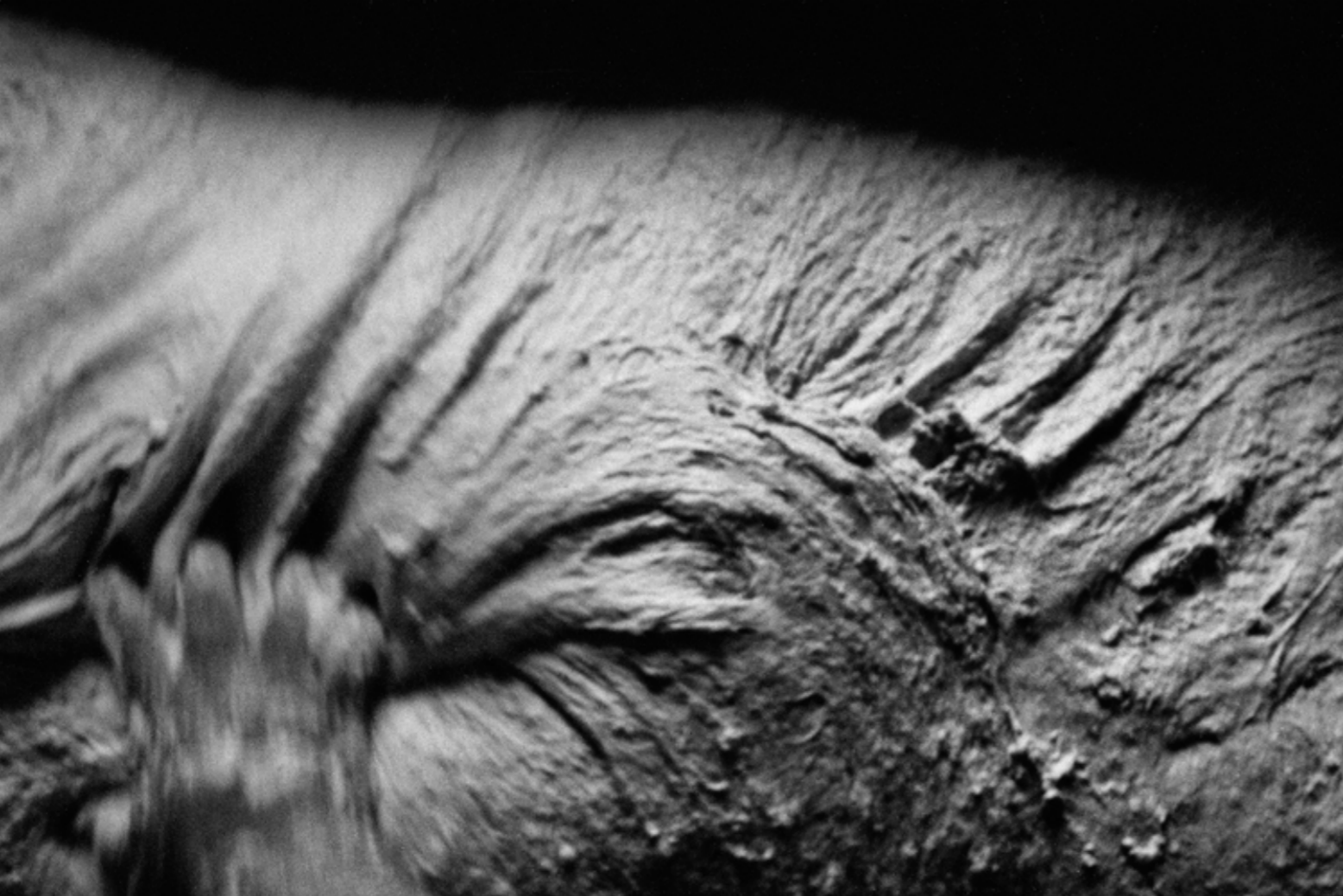
Res

1993/1999

Polyptych, 56 elements
Lambda print on aluminium

80 x 80 cm each





Antonio Biasiucci

Impasti (Polyptych, 12 elements)

1991

Silver gelatine on barytated paper print, 40 x 40 cm



Antonio Biasiucci

Vacche, Dragoni Varanasi

1987/1991

35 x 53 cm each

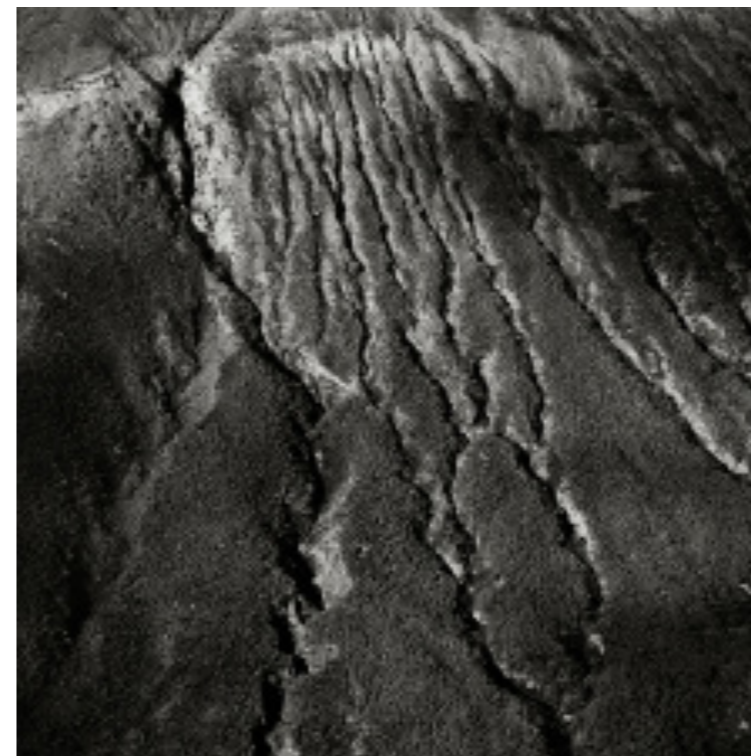
Antonio Biasiucci

Magma

1987/1995

Polyptych, 40 elements
Lambda print on aluminium

80 x 80 cm





Antonio Biasiucci

Vapori

1983/1987

Silver gelatine on baryta print, 30 x 30 cm each

Antonio Biasiucci

Ex voto

2006

Silver gelatine on baryta print

37 x 37 cm



Antonio Biasiucci

Ex voto

2006

Silver gelatine on baryta print

37 x 37 cm



Antonio Biasiucci

Ex voto

2006

Silver gelatine on baryta print

37 x 37 cm



Antonio Biasiucci

Ex voto

2006

Silver gelatine on baryta print

37 x 37 cm

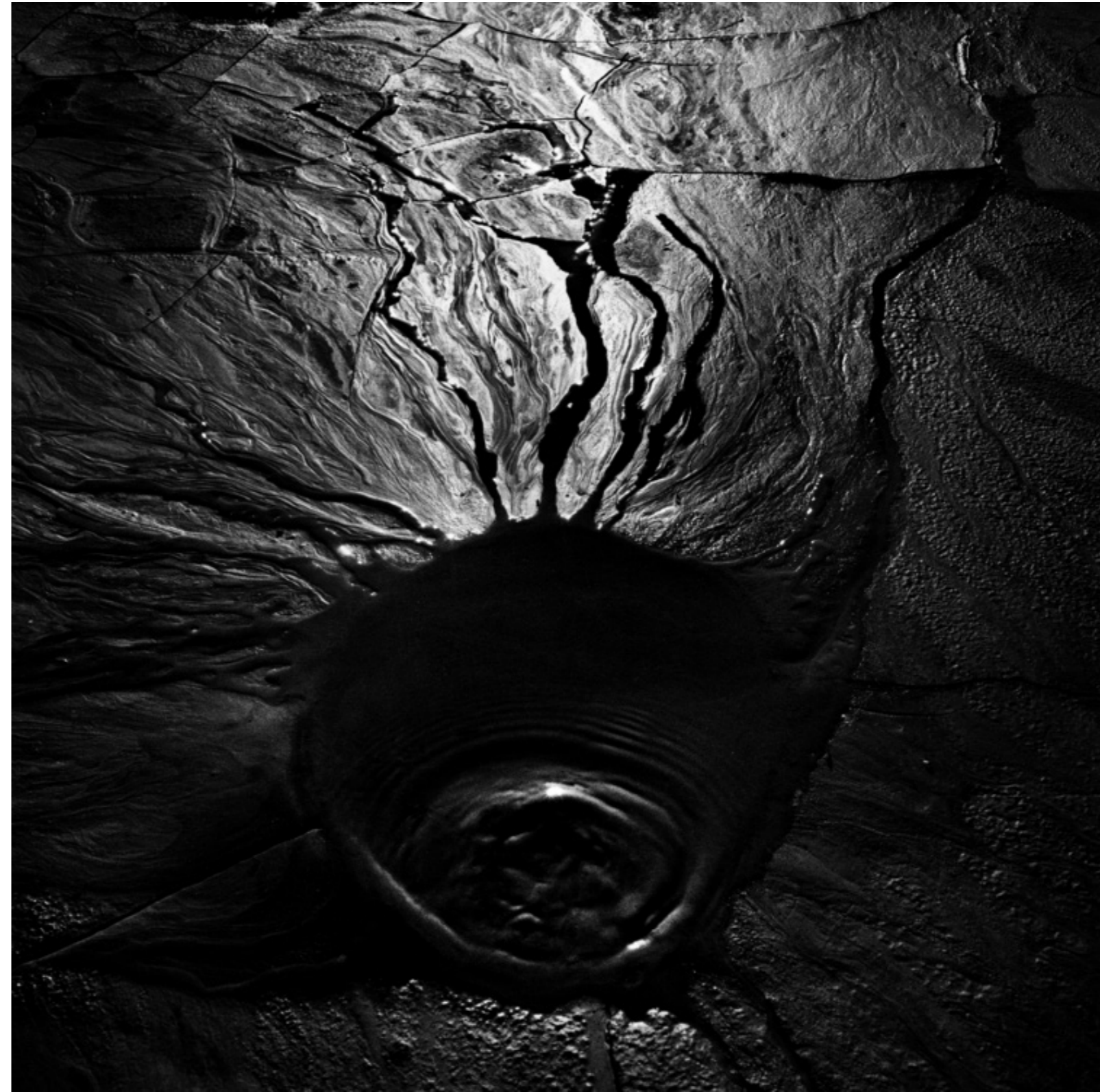


Bocca della Malvizia nr.1 (from the series Magma)

1987 - 1993

Inkjet print on baryta paper

80 x 80 cm



Antonio Biasiucci

Etna nr.5 (from the series Magma)

1987 - 1993

Inkjet print on baryta paper

80 x 80
Ed. 7/7



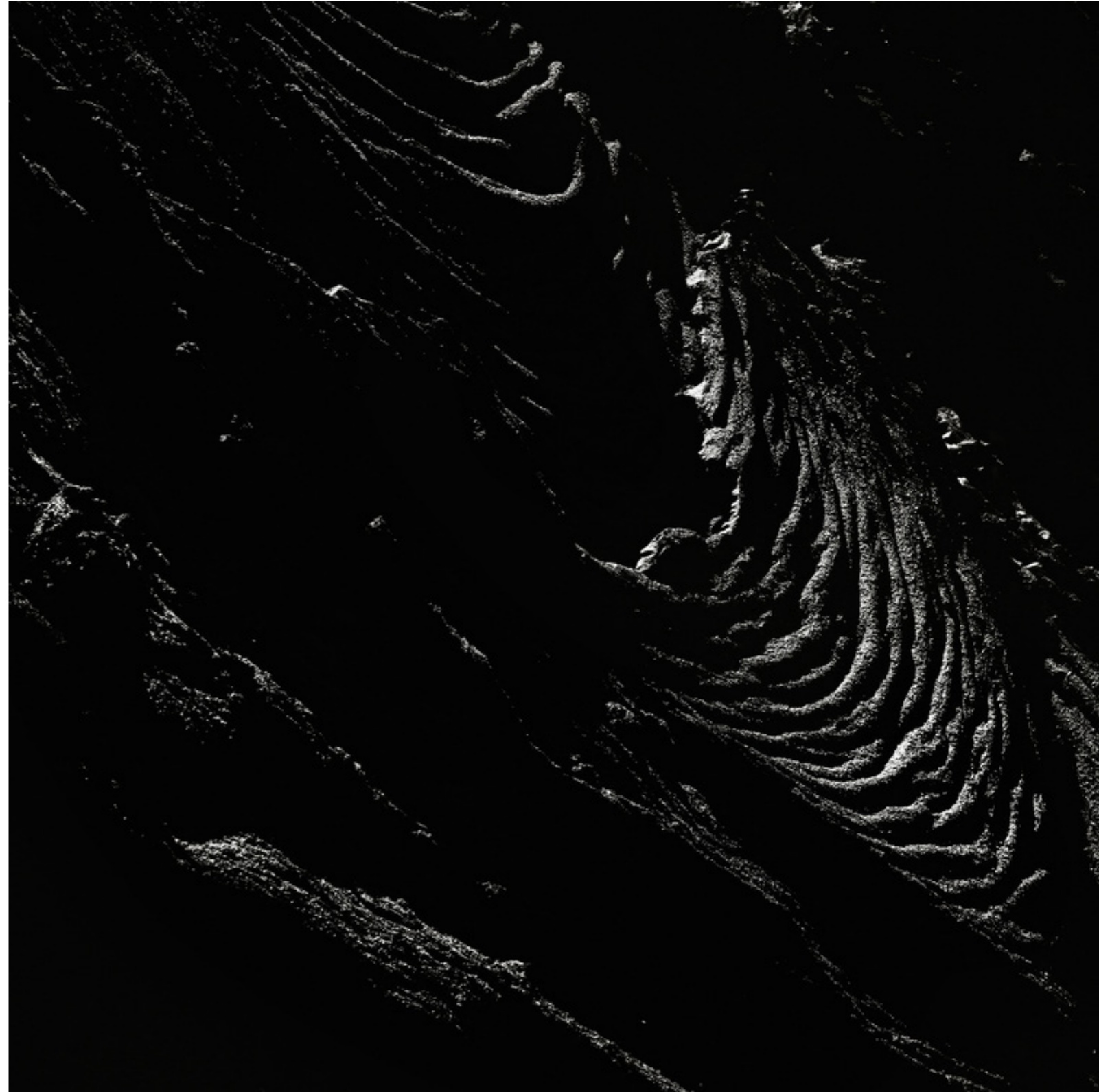
Antonio Biasiucci

Etna nr.3 (from the series Magma)

1987 - 1993

Inkjet print on baryta paper

80 x 80 cm

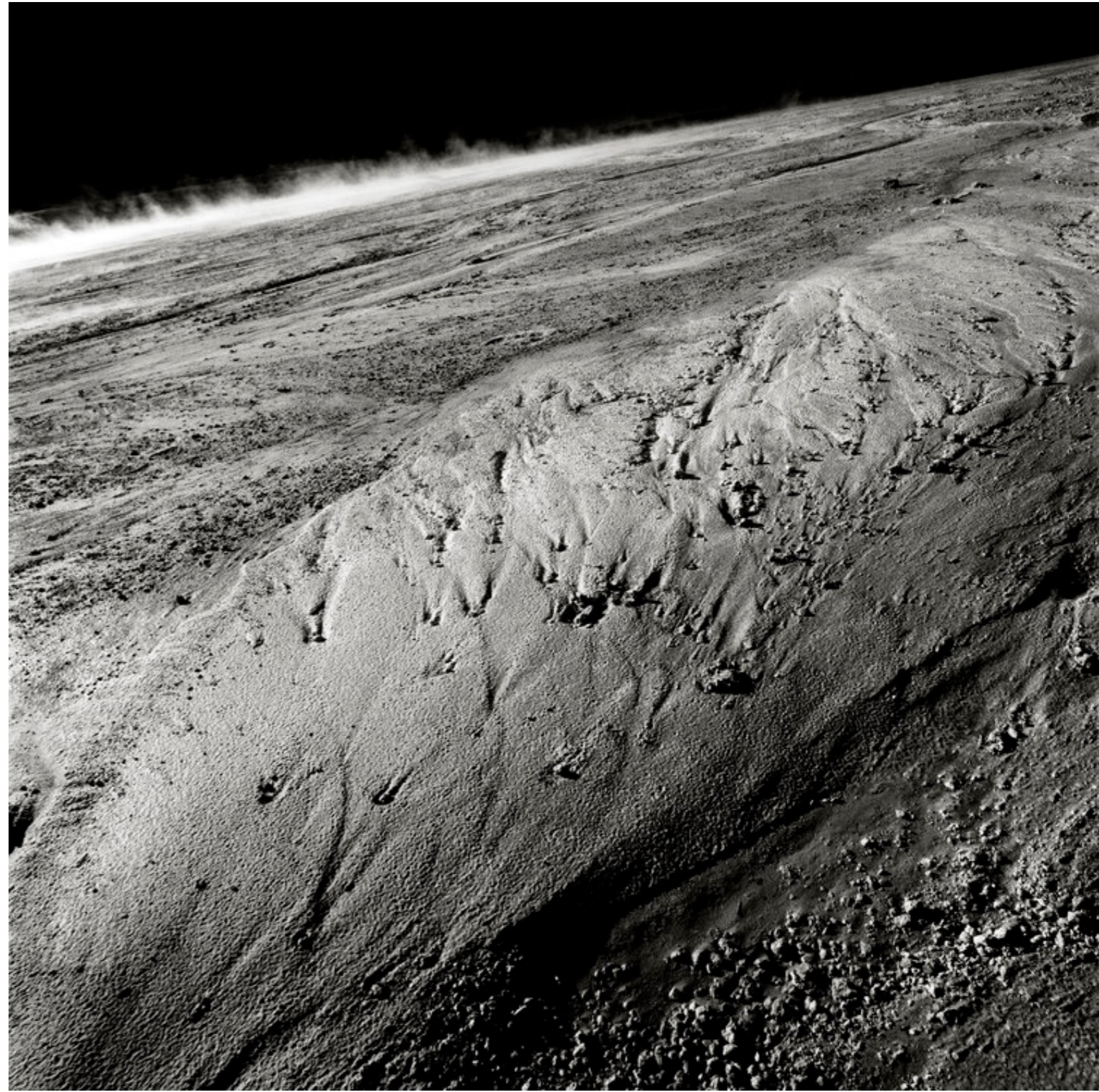


Solfatara nr.1 (from the series Magma)

1987 - 1993

Inkjet print on baryta paper

80 x 80 cm



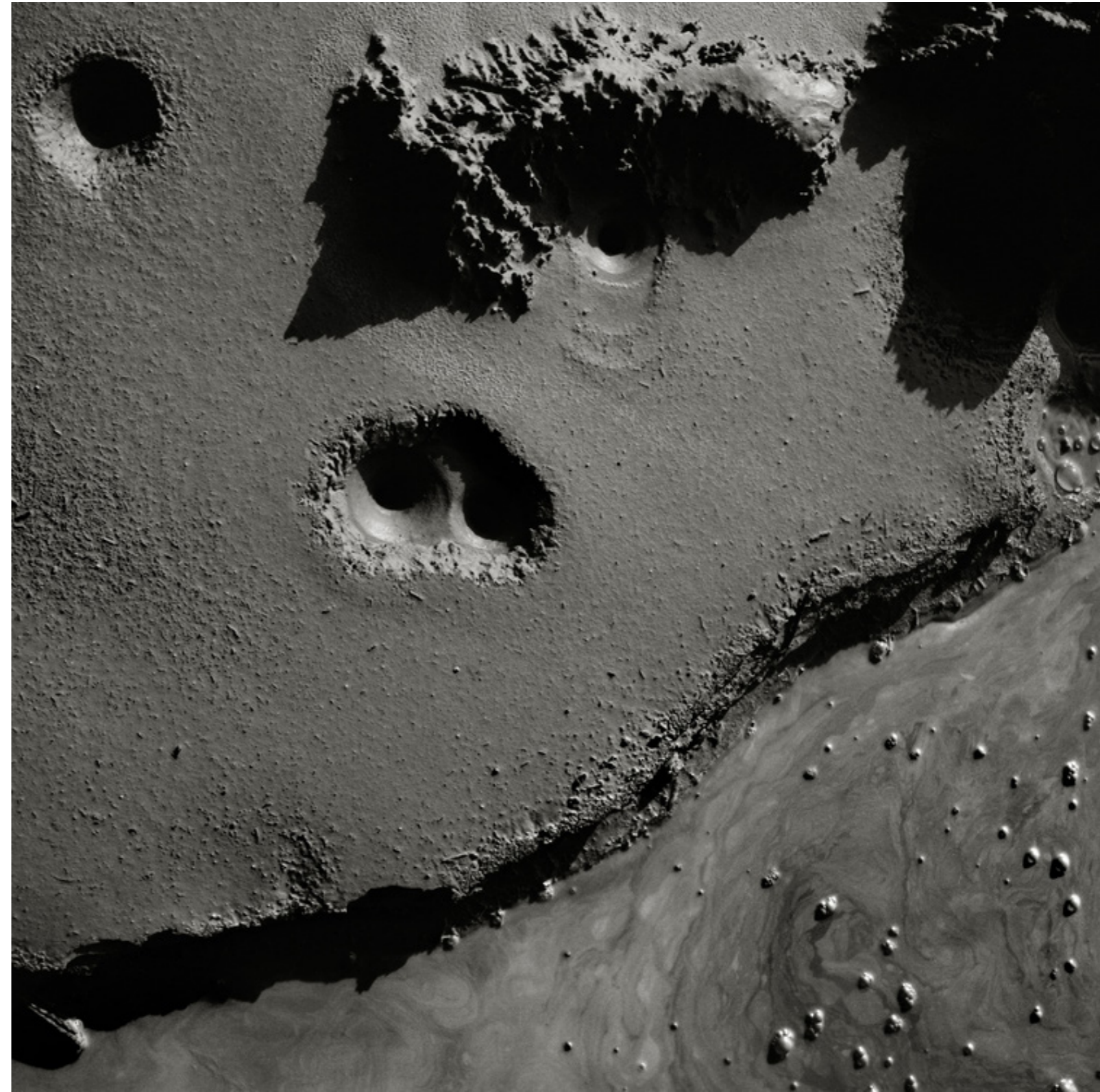
Antonio Biasiucci

Solfatara nr.9 (from the series Magma)

1987 - 1993

Inkjet print on baryta paper

80 x 80 cm



Stromboli nr.7 (from the series Magma)

1987 - 1993

Inkjet print on baryta paper

80 x 80 cm

